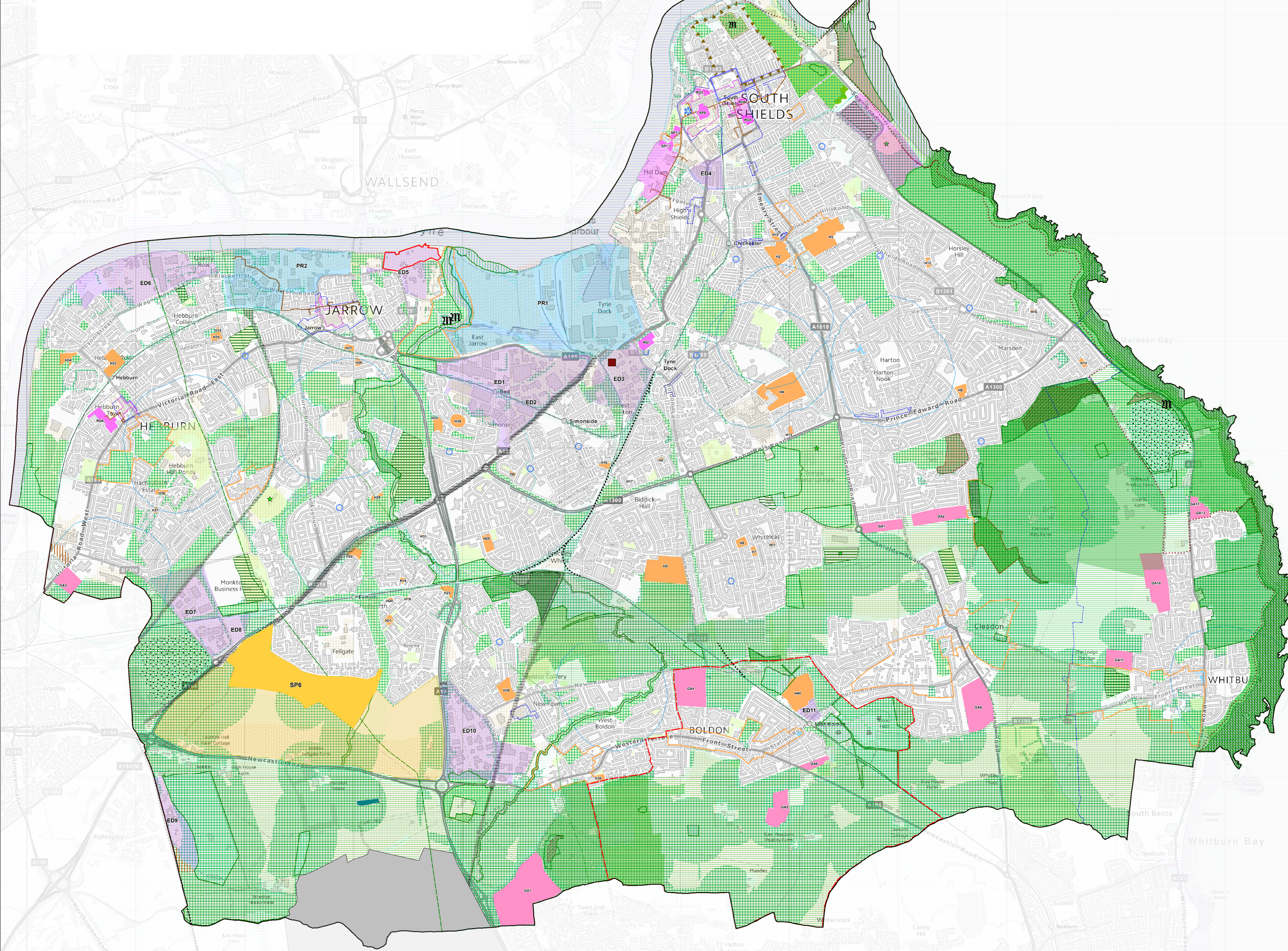




# South Tyneside Council

## DRAFT Local Plan Policies

### Map



- South Tyneside Borough Boundary
- IAMP AAP Area
- Strategic Allocations**
  - Housing Allocations in the Main Urban Area SP4
  - Urban and Village Sustainable Growth Areas SP5
  - Fellgate Sustainable Growth Area SP6
  - Fellgate Sustainable Growth Area - Safeguarded Land SP6
  - Regeneration Sites SP3, SP4, SP7-13
  - Regeneration Areas SP7, SP13
  - Employment Land for General Economic Development SP3, SP14, SP15
  - Provision of Land for Port and River Related Development SP3, SP16
- Meeting the Challenge of Climate Change, Flooding and Coastal Change**
  - Areas Potentially Suitable for Wind Energy Development Policy 6
  - District Heating Networks Policy 6
  - Floodzone 3 Policy 8
  - Floodzone 2 Policy 8
  - Coastal Change Management Area Policy 12
- Delivering a Mix of Homes**
  - East Boldon Neighbourhood Area SP18
  - Whitburn Neighbourhood Planning Area SP18
    - Policy 14 - See Local Plan Inset Map 24
    - Policy 18 - See Local Plan Inset Map 25
  - Gypsy, Travellers and Travelling Showpeople Sites Policy 21
- Building a Strong and Competitive Economy**
  - CEMEX Jarrow Aggregates Wharf Policy 24, Policy 58
- Ensuring the Vitality of Centres**
  - Town and District Centres SP20, Policy 26, Policy 31
  - Local Centres SP20, Policy 26, Policy 31
  - Local Neighbourhood Hubs Policy 29
  - South Shields Market Policy 30
  - Special Policy Area Policy 31
  - 400m Secondary School Buffer Policy 32
- Conserving and Enhancing the Natural Environment**
  - Special Protection Area (SPA), SSSI, Ramsar sites Policy 33, Policy 34
  - Special Area of Conservation (SAC) Policy 33, Policy 34
  - Local Wildlife Sites Policy 33, Policy 34
  - Local Nature Reserves Policy 33, Policy 34
  - Local Geodiversity Sites Policy 33, Policy 34
  - Wildlife Corridor SP3, Policy 33, Policy 34
  - 7.2km Buffer around SAC/SPA Policy 34
  - Green Infrastructure Network SP3, SP22
  - Designated Open Space Policy 37
  - New Sporting Facilities, Playing Pitch and Infrastructure Improvements SP23
  - New Playing Field Provision and Pitch Improvements SP23
  - Areas of High Landscape Value Policy 39
  - Green Belt Boundary SP3, Policy 41
- Conserving and Enhancing the Historic Environment**
  - Arbeia World Heritage Site Policy 42
  - Arbeia WHS Setting Policy 42
  - Scheduled Ancient Monuments Policy 43
  - Important Archaeological Sites Policy 43
  - Conservation Areas Policy 43
  - Historic Parks and Gardens Policy 43
- Infrastructure**
  - Safeguarded for Potential Metro Extension and Track Dudding Policy 53
  - Land Safeguarded for New Metro Stations SP16, Policy 53
- Waste and Minerals**
  - Waste Facilities Policy 56
  - Quarries Policy 58

The Airport Exclusion Outer Zone covers the entire Borough Policy 54  
The Minerals Safeguarding Area covers the entire Borough Policy 57

The following policies are relevant to the whole Borough:  
SP1, SP2, SP17, SP19, SP21, SP24, SP25, SP26  
Policies 1, 2, 3, 4, 5, 7, 9, 10, 11, 13, 15, 16, 17, 19, 20, 22, 23, 25, 27, 28, 35, 36, 38, 44, 45, 46, 47, 48, 49, 50, 51, 52, 54, 56, 57, 60, 61, 62